

IMPORTANT: SC MD/DO, RCP, AND PA LICENSEES

CE Reporting: The South Carolina Medical Board has partnered with CE Broker and has gone live with a new CE tracking and reporting system. CE Broker will be tracking continuing education for Medical Physicians, Respiratory Care Practitioners and Physician Assistants.

This is a **free** service to all licensees, and you should claim your account by following the link below.

Activate Your Free Basic Account:

<https://www.cebroker.com/sc/account/basic>

The service provides licensees with simple CE management, course search, clear notification of changes in CE requirements, automatic reporting by providers, and much more. *Upgraded accounts are available from CE Broker, but are not required.

All licensees who intend to renew their licenses in **active** status should have an account set up with CE Broker and assure all continuing education is reported prior to active renewal.

Please visit the Board's website for answers to any of your questions concerning CE requirements, laws, policies, and licensure requirements.

<https://www.llr.sc.gov/med/>.

If you have questions concerning setting up your account or problems with your account with CE Broker, please contact CE Broker customer support directly.

CE BROKER CUSTOMER SUPPORT (877) 434-6323

MON-FRI 8AM-8PM EST

SUPPORT@CEBROKER.COM

LIVE CHAT AVAILABLE

[SUPPORT.CEBROKER.COM](https://www.cebroker.com/support)

The South Carolina Board of Medical Examiners Partners with CE Broker

CE Broker is now the official CME tracking system of the South Carolina Board of Medical Examiners. Your board has provided you with a free Basic Account, so you have our most helpful CME tracking tools right at your fingertips.



FREE ACCESS

With the free Basic account, you will have access to your Course History. This lists all of the courses you have completed so far so you can easily find and report any CME that might be missing. You will never have to pay to access all the necessary tools to renew your license.



COMPREHENSIVE COURSE SEARCH

One of the best tools we offer licensees is our Course Search. You can find every course you need to complete your license renewal. After you are finished with each course, many educational providers will report to CE Broker for you.

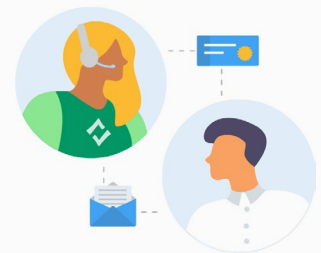


HELPFUL SUPPORT CENTER

Our support center is staffed with experts who have been trained on the rules and regulations of the South Carolina Board of Medical Examiners. You can reach them by phone, live chat, or email 8AM-8PM ET Monday through Friday.

UPGRADED ACCOUNT OPTIONS

You can also subscribe to Professional or Concierge Accounts, which offer above-and-beyond CME tracking tools to further simplify your renewal process. With our Professional account you can access a personal CME Transcript which outlines exactly what requirements you have left to complete. The Concierge account includes your own CE Broker account manager who can guide you through the CME process, step by step.



How to activate your free CE Broker account

- 1 | Visit www.cebroker.com/sc/plans
- 2 | Select the Sign Up button under the Basic Account option.
- 3 | Enter your license number and get started!